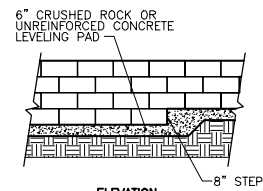
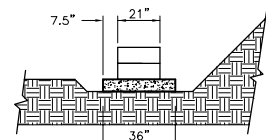


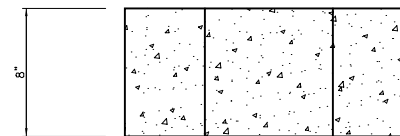
ELEVATION
TOP OF WALL STEPS
NO SCALE



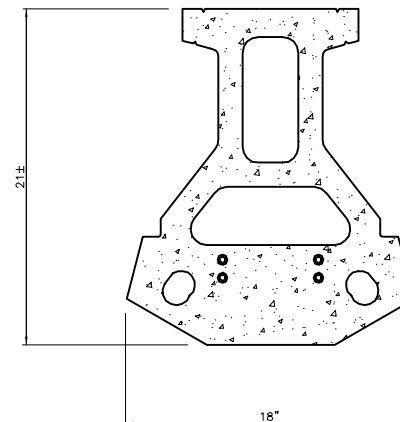
ELEVATION
BOTTOM OF WALL STEPS
NO SCALE



SECTION
LEVELING PAD DETAIL
NO SCALE



STANDARD ELEVATION

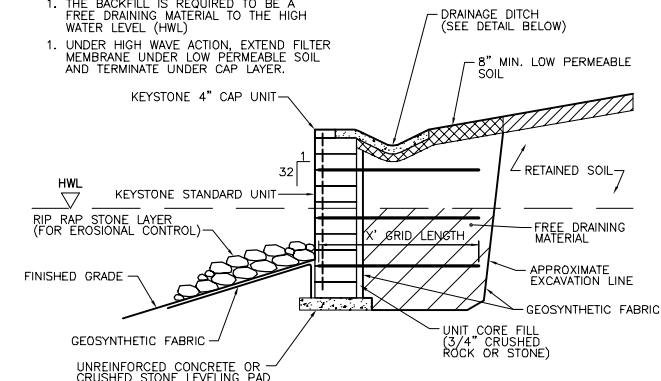


STANDARD PLAN

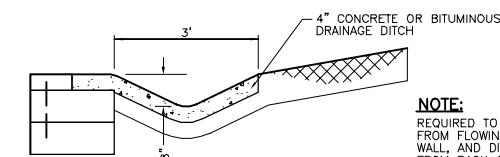
STANDARD UNIT
NO SCALE

BACKFILL NOTES:

1. THE BACKFILL IS REQUIRED TO BE A FREE DRAINING MATERIAL TO THE HIGH WATER LEVEL (HWL) (SEE DETAIL BELOW)
1. UNDER HIGH WAVE ACTION, EXTEND FILTER MEMBRANE UNDER LOW PERMEABLE SOIL AND TERMINATE UNDER CAP LAYER.

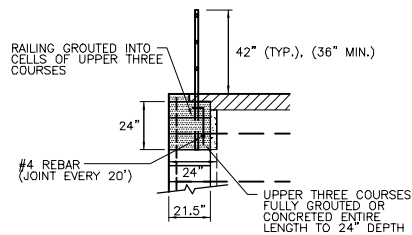


TYPICAL REINFORCED RIVER WALL SECTION
STANDARD UNIT - NEAR VERTICAL SETBACK
NO SCALE

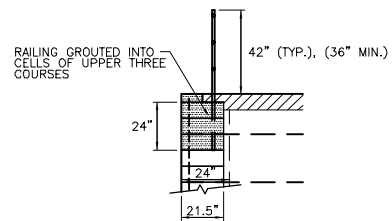


NOTE:
REQUIRED TO DIVERT RUNOFF FROM FLOWING OVER FACE OF WALL, AND DIVERT WATER AWAY FROM BACK OF WALL AREA - ALSO REQUIRED FOR SAFETY CONSIDERATIONS.

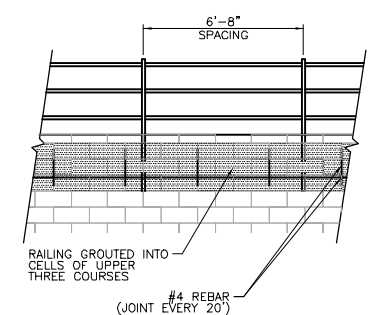
DRAINAGE DITCH DETAIL
STANDARD UNIT - NEAR VERTICAL SETBACK
NO SCALE



STANDARD UNIT SECTION

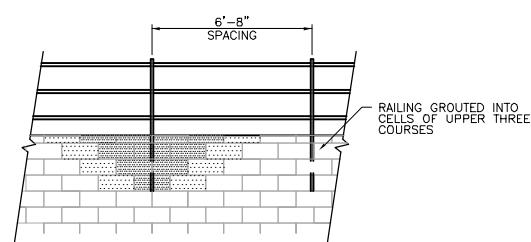


STANDARD TYPICAL RAILING DESIGN SECTION



TYPICAL RAILING ELEVATION

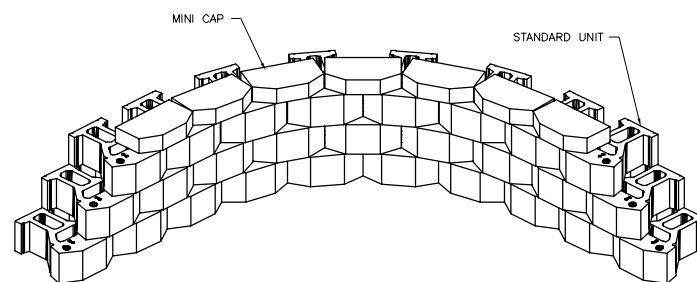
TYPICAL RAILING DESIGN
DIRECT MOUNT - 50 PLF
STANDARD UNITS
NO SCALE



TYPICAL RAILING ELEVATION

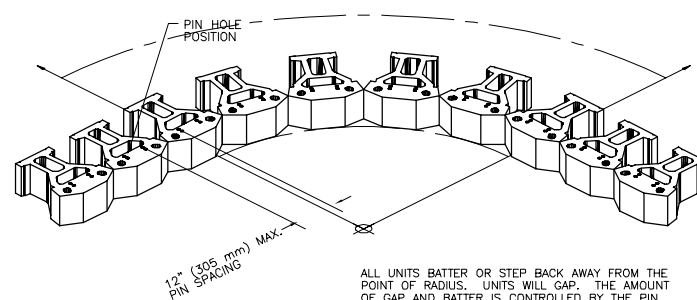
TYPICAL RAILING DESIGN
DIRECT MOUNT - 20 PLF - STANDARD UNITS
NO SCALE

100% OF MASS AVAILABLE FOR OVERTURNING
50% OF MASS AVAILABLE FOR OVERTURNING



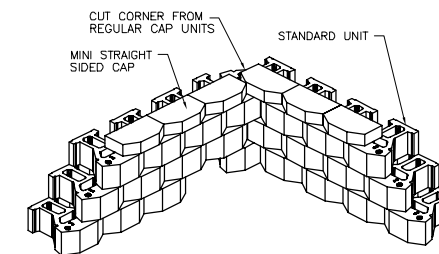
CONCAVE CURVE
NO SCALE

NOTE:
ALL UNITS SHOWN WITH SCULPTURED ROCK FACE FINISH



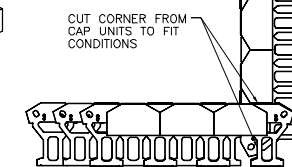
FIRST COURSE
NO SCALE

ALL UNITS BATTER OR STEP BACK AWAY FROM THE POINT OF RADIUS. UNITS WILL GAP. THE AMOUNT OF GAP AND BATTER IS CONTROLLED BY THE PIN POSITION. GAPS BETWEEN UNITS SHALL NOT EXCEED 1/2"

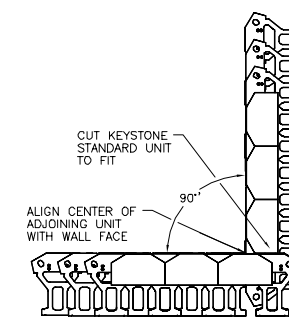


90° INSIDE CORNER - SQUARED
NO SCALE

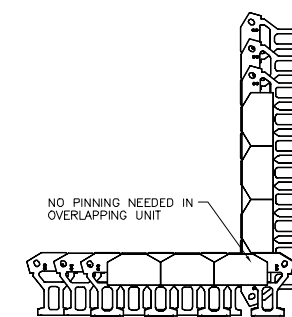
NOTE:
ALL UNITS SHOWN WITH SCULPTURED ROCK FACE FINISH



CAP COURSE
NO SCALE



FIRST COURSE
NO SCALE



SECOND COURSE
NO SCALE

COPYRIGHT (c) 2000 by KeyStone Retaining Wall Systems, Inc.

DESIGN IS FOR INTERNAL STABILITY OF THE KEYSTONE WALL STRUCTURE ONLY. EXTERNAL STABILITY, INCLUDING BUT NOT LIMITED TO FOUNDATION AND SLOPE STABILITY, IS THE RESPONSIBILITY OF THE OWNER. THE DESIGN IS BASED ON THE ASSUMPTION THAT THE MATERIAL WITHIN THE RETAINED MASS, METHODS OF CONSTRUCTION, AND QUALITY OF MATERIALS CONFORM TO KEYSTONE'S SPECIFICATIONS FOR THIS PROJECT.

THIS DRAWING IS BEING FURNISHED FOR THIS SPECIFIC PROJECT ONLY. ANY PARTY ACCEPTING THIS DOCUMENT DOES SO IN CONFIDENCE AND AGREES THAT IT SHALL NOT BE DUPLICATED IN WHOLE OR IN PART, NOR DISCLOSED TO OTHERS WITHOUT THE CONSENT OF KEYSTONE RETAINING WALL SYSTEMS, INC.

No.	Date	Revision	By

KEYSTONE
RETAINING WALL SYSTEMS
4444 West 78th Street
Minneapolis, MN 55435
(612) 897-1040

Designed By:
RKM
Checked By:
CDM
Date:
08/08/00

Client:
CONTECH
Scale:
AS NOTED

CONTECH
CONSTRUCTION PRODUCTS INC.

Title:
KEYSTONE WALL DETAILS
Project No:

Drawing No:
4