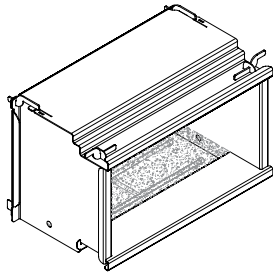
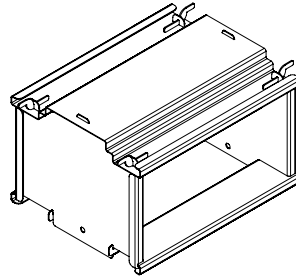


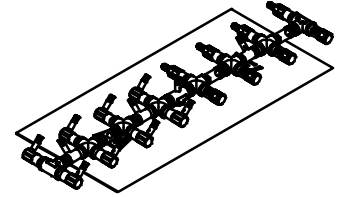
STONEGATE® NO-CUT DESIGNS | ACCESSORIES Sold Separately



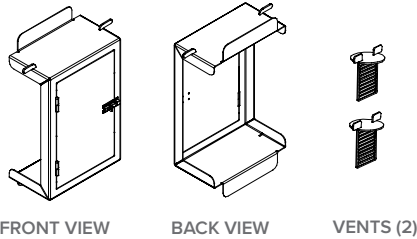
Fireplace Insert - 1-sided



Fireplace Insert - 2-sided

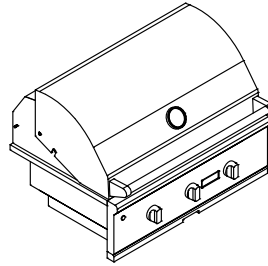


Fireplace Burner Kit

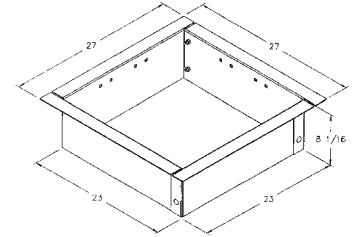


FRONT VIEW BACK VIEW VENTS (2)

Access Door w/Vents



Built-in Grill Head Insert



Fire Pit Insert

Fireplace Insert & Access Door Options

| Manufacturer | Model | Description | Notes |
|--------------|-------------|--|---|
| RJ Thomas | RJT FPI-3 | 2-sided fireplace insert, black carbon steel | If buying direct from RJ Thomas: -Discounts start at 6 units. -Additional discounts for orders of 100+ units. |
| RJ Thomas | RJT FPI-4 | 1-sided fireplace insert, black carbon steel | |
| RJ Thomas | RJT FPI-D | Access door w/ 2 vents, black carbon steel | |
| RJ Thomas | RJT FPI-3/S | 2-sided fireplace insert, stainless steel | |
| RJ Thomas | RJT FPI-4/S | 1-sided fireplace insert, stainless steel | |
| RJ Thomas | RJT FPI-D/S | Access door w/ 2 vents, stainless steel | |

Fire Pit Steel Insert

| Manufacturer | Model | Description | Notes |
|--------------|-------|---------------------------|-------|
| RJ Thomas | IQ-23 | Black carbon steel insert | |

Grill Head Options

| Manufacturer | Model | Description | Notes |
|--------------|----------|---|---|
| Coyote | C2C34 | Grill head; 32 in. block opening; counter cutout width 31 in.; fascia width 34 in. | Purchase from a local distributor of your choice. |
| Bull | Angus | Grill head; 32 in. block opening; counter cutout width 31 in.; fascia width 30½ in. | |
| Bull | Lonestar | Grill head; 32 in. block opening; counter cutout width 31 in.; fascia width 30½ in. | |
| Bull | Outlaw | Grill head; 32 in. block opening; counter cutout width 31 in.; fascia width 30½ in. | |
| Blaze | BLZ-4 | Grill head; 32 in. block opening; counter cutout width 30-5/8 in.; fascia width 32½ in. | |
| AOG | 30NBL/T | Grill head; 32 in. block opening; counter cutout width 30-5/8 in.; fascia width 31 in. | |

Fireplace Burner Kits

| Manufacturer | Notes |
|----------------|---|
| Warming Trends | Push button burner units are available for the fireplace and fire pit kits in either LP or Natural Gas. |

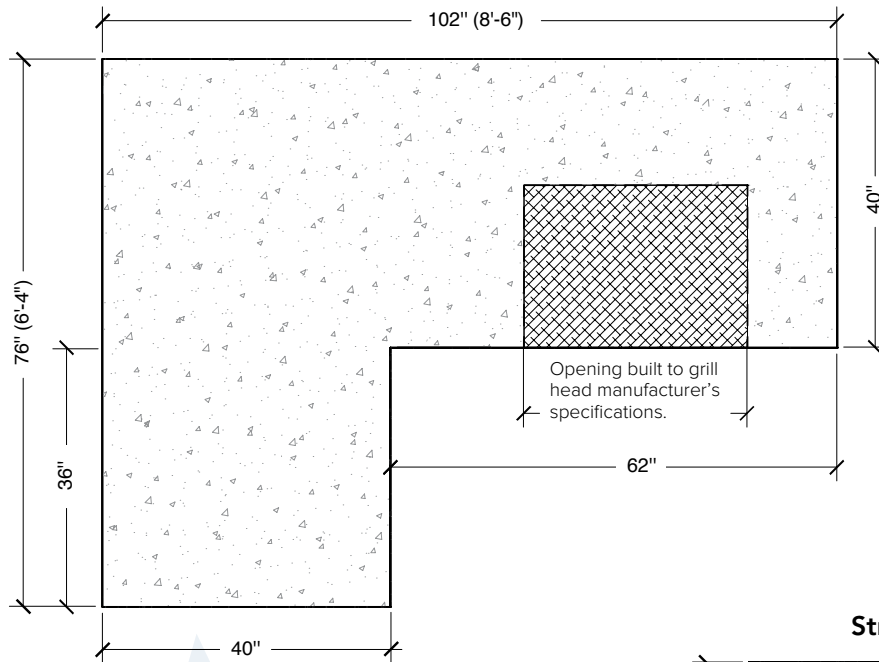
WHERE TO BUY

Buy direct or check with your local dealer for availability.

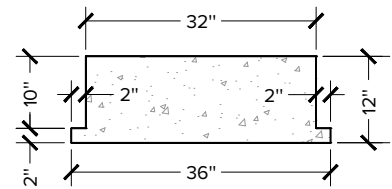
R.J. Thomas
800-762-5002
customerservice@rjthomas.com
www.pilotrock.com/product/stonegate-certified-products

Warming Trends
877-556-5255
www.warming-trends.com

L-Shaped Grill Station Counter Top

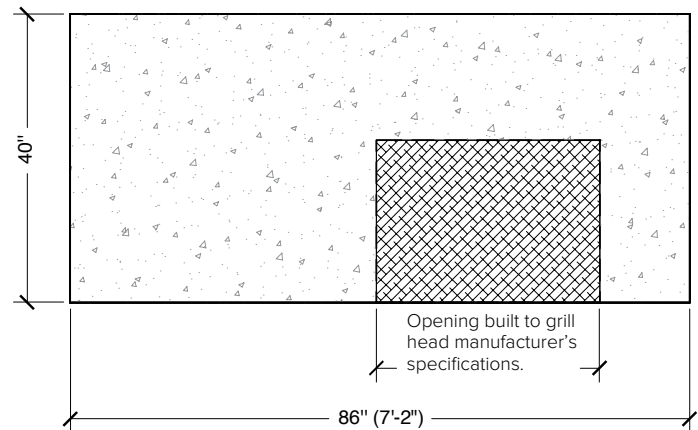


Grill Insert Concrete Filler Piece

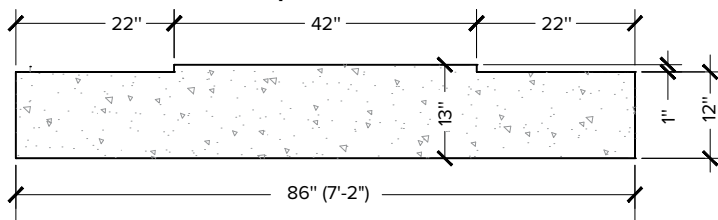


Poured concrete or natural stone are great options for these accessories!

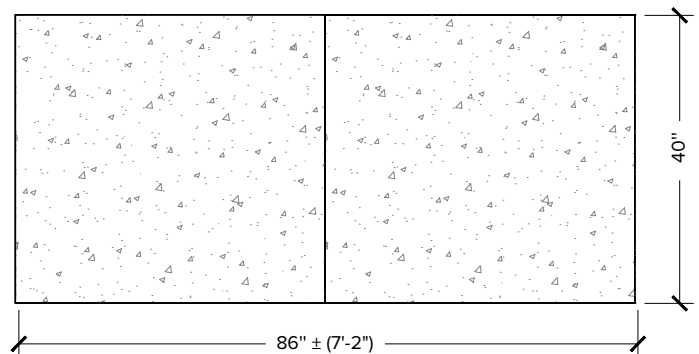
Straight Grill Station Counter Top



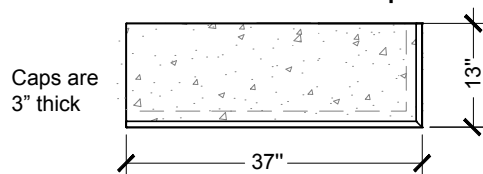
Fireplace Hearth



Fireplace Top



Fire Pit Concrete Caps



Learn how to create concrete counter tops at www.quikrete.com

A 2-piece top is shown in the detail above but smaller sections can be used for ease of handling if preferred.



Scan QR code for more information.