

This design can be built using either Stonegate® or Keystone Country Manor®.



46" Square Fire Pit - GAS

2-Course Design





46" Square Fire Pit • 2-Course Design • GAS

General Note:

In consideration of freeze / thaw issues during the cold weather season it is recommended that this outdoor Square Fire Pit element be protected from rain, snow and ice as necessary.

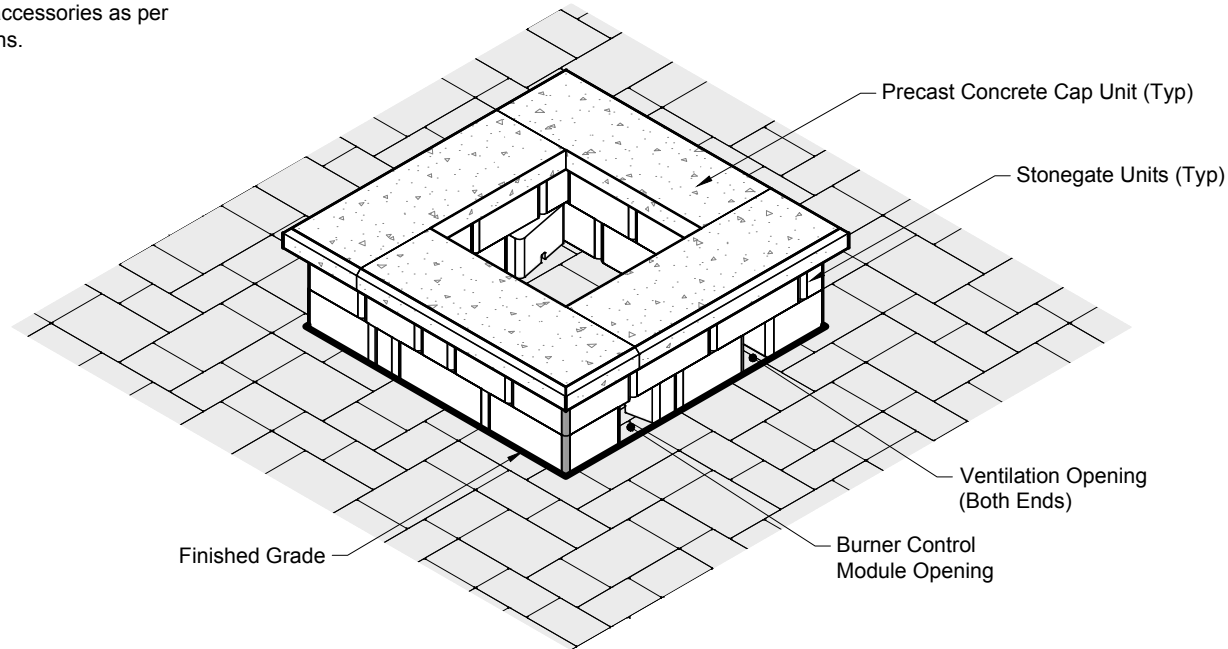
Square Fire Pit Quantity Totals:

Units quantities as follows:

- Large Unit "A" - 16"/14" = 9 Units
- Medium Unit "B" - 12"/10" = 9 Units
- Small Unit "C" - 6"/4" = 8 Units
- Precast Concrete Cap Units = 4

Accessories Note:

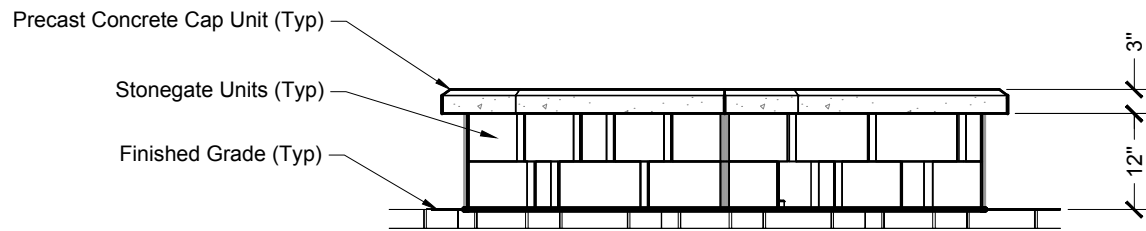
Install vents, burner assembly and accessories as per manufacturers installation instructions.



Square Fire Pit Isometric



46" Square Fire Pit • 2-Course Design • GAS



Square Fire Pit Front Rotated Isometric



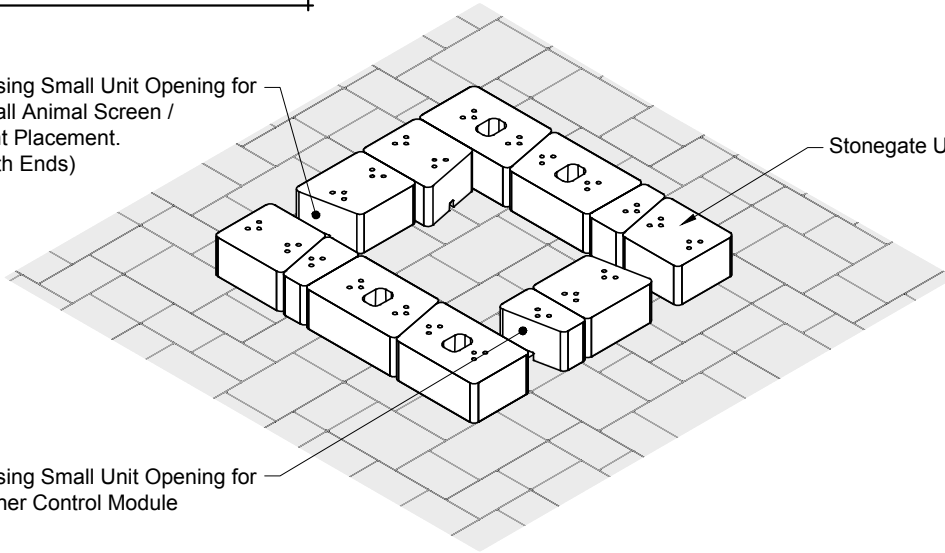
46" Square Fire Pit • 2-Course Design • GAS

1st Course Isometric

Missing Small Unit Opening for Small Animal Screen / Vent Placement. (Both Ends)

Stonegate Units (Typ.)

Missing Small Unit Opening for Burner Control Module



Ventilation Note:

The burner assembly manufacturer may recommend ventilation of the interior fire pit area from a potential gas build up. Two blocks from the 1st course have been removed for at grade ventilation.

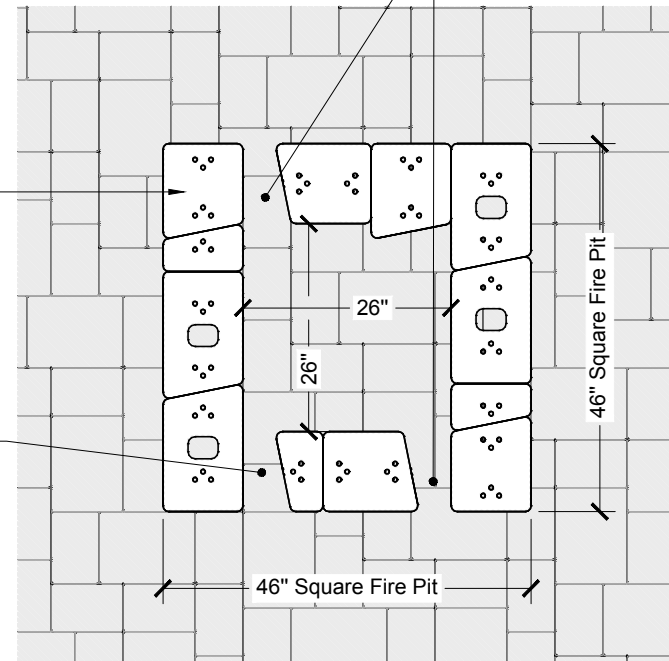
Small animal screen inserts have been supplied to place in the removed block open areas.

Missing Small Unit Opening for Small Animal Screen / Vent Placement. (Both Ends)

Stonegate Units (Typ.)

1st Course Plan

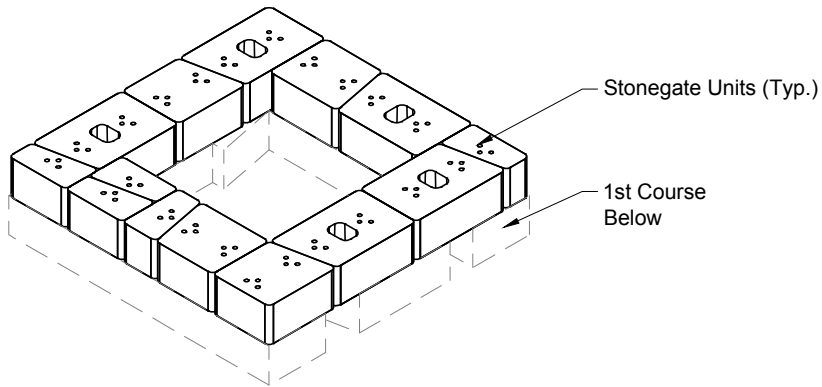
Missing Small Unit Opening for Burner Control Module



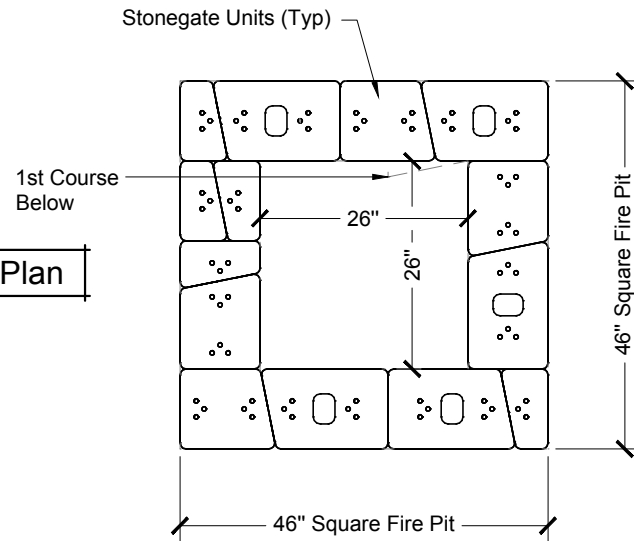


46" Square Fire Pit • 2-Course Design • GAS

2nd Course Isometric



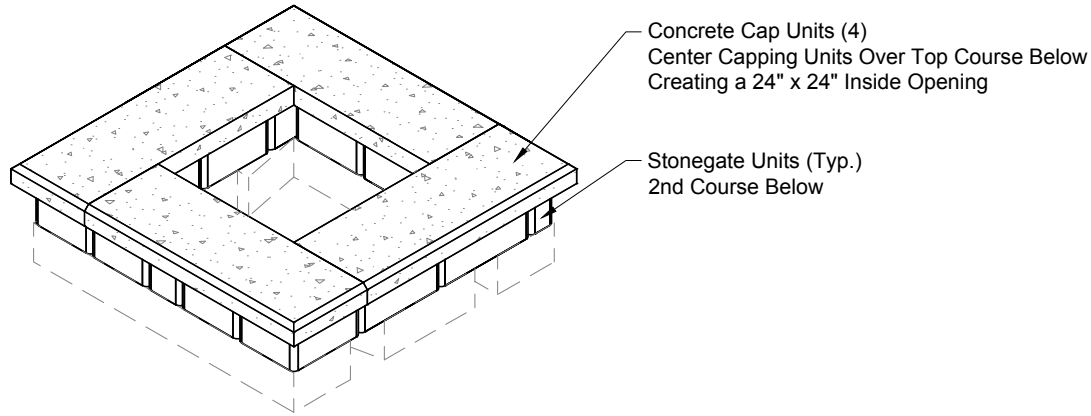
2nd Course Plan





46" Square Fire Pit • 2-Course Design • GAS

2nd Course
Capping Isometric



Concrete Cap Units (4)
Center Capping Units Over Top Course Below
Creating a 24" x 24" Inside Opening

Stonegate Units (Typ.)
2nd Course Below

Concrete Cap Unit Note:

This square fire pit design uses precast concrete cap units. Unit dimensions are as follows:

Concrete Cap Unit:

- Cap Unit is 13" in depth / 37" in length / 3" in height

Install and secure concrete cap units with adhesive as per manufacturers installation instructions.

Concrete Cap Units (4) - Center Capping Units
Over Top Course Below Creating a 24" x 24"
Inside Opening

2nd Course
Capping Plan

Stonegate Units (Typ.)
2nd Course Below

